

* - INDICATES COMPONENTS NOT SUPPLIED BY YASKAWA.
 - INDICATES CUSTOMER WIRING.
 SEE DRAWING UDE00390 FOR CUSTOMER CONNECTION TABLES.
 SEE DRAWING UDE00392 FOR DRIVE PARAMETER SETTINGS.

- NOTES:**
- CONNECTED TO THE CABINET. CUSTOMER TO CONNECT THE CABINET GROUND LUGS TO EARTH GROUND AND UTILITY GROUND.
 - CONDUIT FITTINGS/HUBS SHALL COMPLY WITH THE 'STANDARD FOR CONDUIT, TUBING, AND CABLE FITTINGS, UL 514B'. OR CONDUIT FITTINGS HAVING THE SAME ENVIRONMENTAL RATING AS THE ENCLOSURE SHALL BE USED.
 - WITHOUT THE CIRCUIT BREAKER (OPTION PC OR PE), OR DISCONNECT SWITCH OPTION PD, THE DISCONNECT MEANS MUST BE SUPPLIED BY THE CUSTOMER.
 - BRANCH CIRCUIT PROTECTION TO BE SUPPLIED BY THE CUSTOMER WHEN NOTED ON THE CABINET DATA NAMEPLATE.
 - INSULATED TWISTED SHIELDED WIRE IS REQUIRED. SHIELD TO CONNECT TO PROPER TERMINALS AS SHOWN. CONNECT THE SHIELD ONLY AT THIS END. STUB AND ISOLATE THE OTHER END. DO NOT RUN THESE WIRES IN THE SAME CONDUIT AS THE AC POWER AND AC CONTROL WIRES. KEEP ALL WIRING UNDER 50m IN LENGTH.
 - CUSTOMER TO ADJUST THE THERMOSTAT ON THE SPACE HEATER HR1 FOR THE MINIMUM DESIRED TEMPERATURE INSIDE THE DRIVE CABINET. THIS SET TEMPERATURE IS NORMALLY SELECTED TO BE SLIGHTLY HIGHER THAN THE MINIMUM AMBIENT TEMPERATURE OF THE AIR SURROUNDING THE CABINET, AND IS THE TEMPERATURE AT WHICH THE SPACE HEATER HR1 WILL SHUT OFF.
 - FOR A CONTROL TRANSFORMER T1 POWER RATING OF 350VA OR GREATER, SECONDARY FUSE F6 IS ADDED.
 - IF AC MOTOR IS FURNISHED WITH A N.C. THERMAL SWITCH THEN SET DRIVE PARAMETER H1-08 TO 27. THIS WILL CAUSE THE DRIVE TO COAST TO STOP UPON AN AC MOTOR THERMAL FAULT. ALONG WITH THIS, ADD THE FOLLOWING CUSTOMER WIRING: WIRE THE N.C. THERMAL SWITCH BETWEEN TERMINAL S8 OF THE 120VAC INTERFACE CARD AND ONE SIDE OF THE 120VAC SOURCE.
 - OPTIONS TD, TG, TH, TJ, TL, TQ OR TU CONTROL (SEE UDE00392 FOR MORE INFORMATION)
 - CUSTOMER TO REPLACE THE JUMPER WITH NORMALLY CLOSED SAFETY INTERLOCKS, IF APPLICABLE.
 - CUSTOMER MUST PROVIDE PROPER SHORT CIRCUIT PROTECTION AND MEANS OF DISCONNECT.

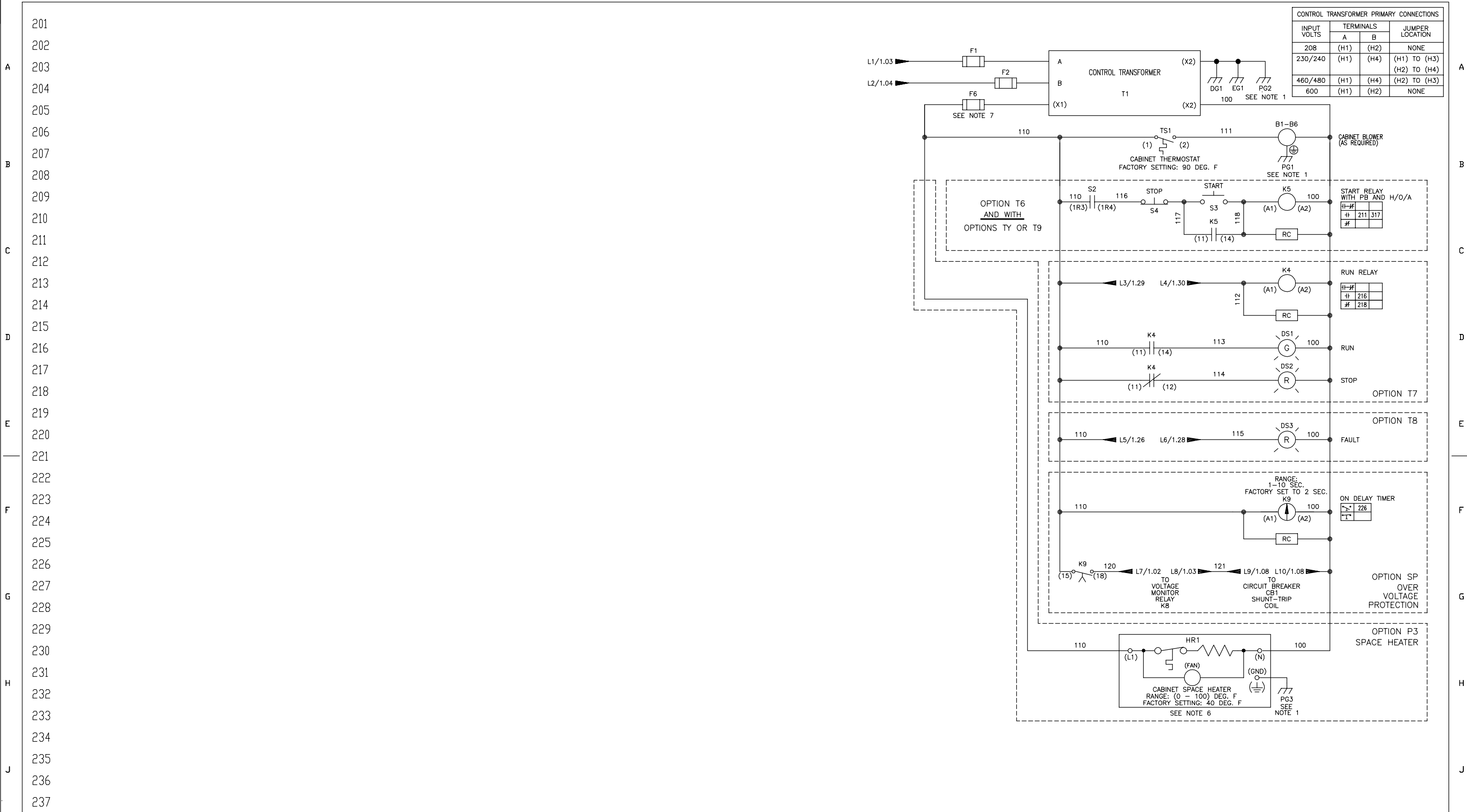
REV.	DESCRIPTION	ECO #	DRAWN BY	DATE
08	ADD OPTION P9 SURGE SUPPRESSOR	8264	RCR	01/08/18
07	DELETED WIRE NO'S 1L1 AND 1L2 TO F1 AND F2	7812	NSL	04/07/17
06	ADD K5 TO HOA W/T6 & SERIAL COMM'S	7217	MDK	06/28/16

YASKAWA

DRAWN BY:	D.R. CMELAK	DATE:	11/16/12	TITLE:	SCHEMATIC DIAGRAM
CHECKED:	D. PACKER	DATE:	11/16/12		IQPUMP1000 CONFIGURED
TECH:		DATE:			TYPE 3R
APPROVED:	K. FLIERL	DATE:	11/16/12	SIZE:	D
ORIGINAL DESIGN:	D.R. CMELAK	DATE:	11/16/12	REVISION:	08
				PAGE:	1 of 3

THIS DOCUMENT AND INFORMATION CONTAINED IN IT ARE CONFIDENTIAL, AND CANNOT BE COPIED OR DISCLOSED IN WHOLE OR IN PART WITHOUT THE EXPRESS WRITTEN CONSENT OF YASKAWA AMERICA INC.

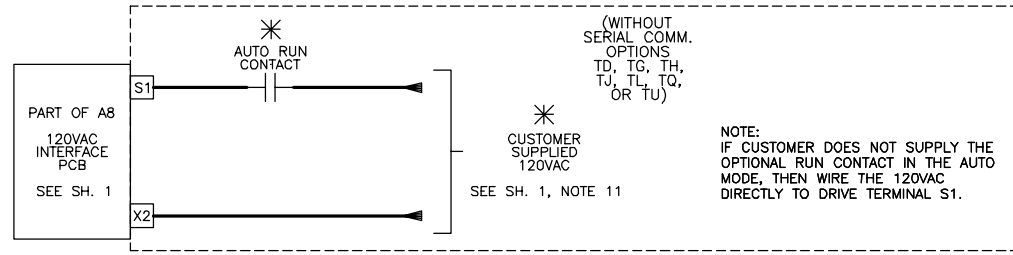
DRAWING #: DS.Q1C3R.05



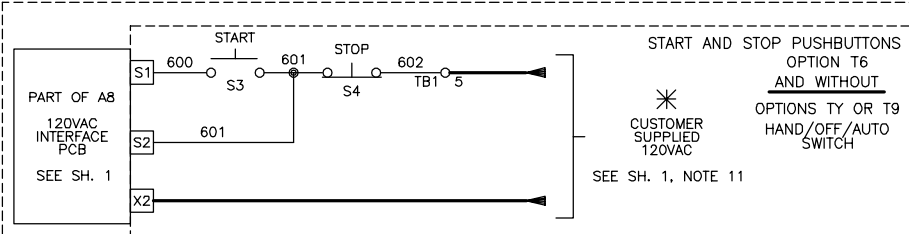
SEE SHEET 1 FOR NOTES.

YASKAWA	DRAWN BY:	D.R. CMELAK	DATE:	11/16/12	TITLE:	SCHEMATIC DIAGRAM										
	CHECKED:	D. PACKER	DATE:	11/16/12		IQPUMP1000 CONFIGURED										
<small>THIS DOCUMENT AND INFORMATION CONTAINED IN IT ARE CONFIDENTIAL, AND CANNOT BE COPIED OR DISCLOSED IN WHOLE OR IN PART WITHOUT THE EXPRESS WRITTEN CONSENT OF YASKAWA AMERICA INC.</small>						TECH:		DATE:		SIZE:	D	REVISION:	08	PAGE:	2 of 3	
						APPROVED:	K. FLIERL	DATE:	11/16/12	ORIGINAL DESK:	D.R. CMELAK	DATE:	11/16/12	DRAWING#:	DS.Q1C3R.05	

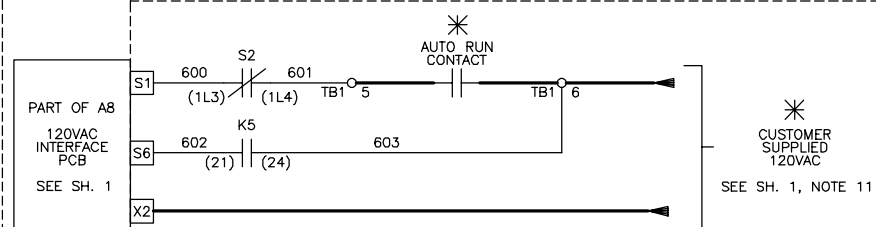
RUN/STOP CONTROL WITH OPTION TV (FROM SHEET 1)



OR



OR



(ALSO SEE SH. 1 FOR MORE WIRING.)

NOTE: IF CUSTOMER DOES NOT SUPPLY THE OPTIONAL RUN CONTACT IN THE AUTO MODE, THEN ADD A JUMPER BETWEEN TERMINAL BLOCK TB1 TERMINALS 5 AND 6.

CONTACT SEQUENCE CHART FOR S2
X - INDICATES CONTACT CLOSED

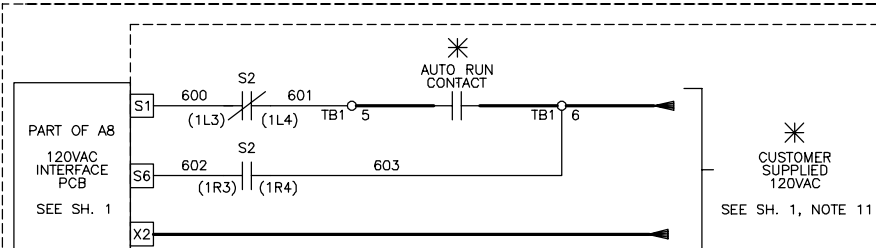
CONTACT	POSITION			MANUF. LOCATION /TYPE
	HAND	OFF	AUTO*	
1	X			1RO
2			X	1LO

* SCHEMATIC SHOWS THIS POSITION.

OPTION T6
START AND STOP PUSHBUTTONS
AND WITH

OPTION T9, OR PART OF OPTION T9
HAND/OFF/AUTO SWITCH

OR



NOTE: IF CUSTOMER DOES NOT SUPPLY THE OPTIONAL RUN CONTACT IN THE AUTO MODE, THEN ADD A JUMPER BETWEEN TERMINAL BLOCK TB1 TERMINALS 5 AND 6.

CONTACT SEQUENCE CHART FOR S2
X - INDICATES CONTACT CLOSED

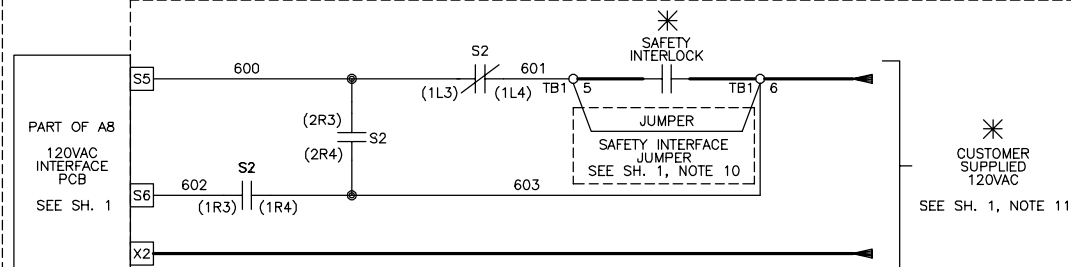
CONTACT	POSITION			MANUF. LOCATION /TYPE
	HAND	OFF	AUTO*	
1	X			1RO
2			X	1LO

* SCHEMATIC SHOWS THIS POSITION.

OPTION T9, OR PART OF OPTION T9
HAND/OFF/AUTO SWITCH
AND WITHOUT

OPTIONS TD, TG, TH, TJ, TL, TQ OR TU
SERIAL COMMUNICATIONS

OR



NOTE: IF CUSTOMER DOES NOT SUPPLY THE OPTIONAL RUN CONTACT IN THE AUTO MODE, THEN ADD A JUMPER BETWEEN TERMINAL BLOCK TB1 TERMINALS 5 AND 6.

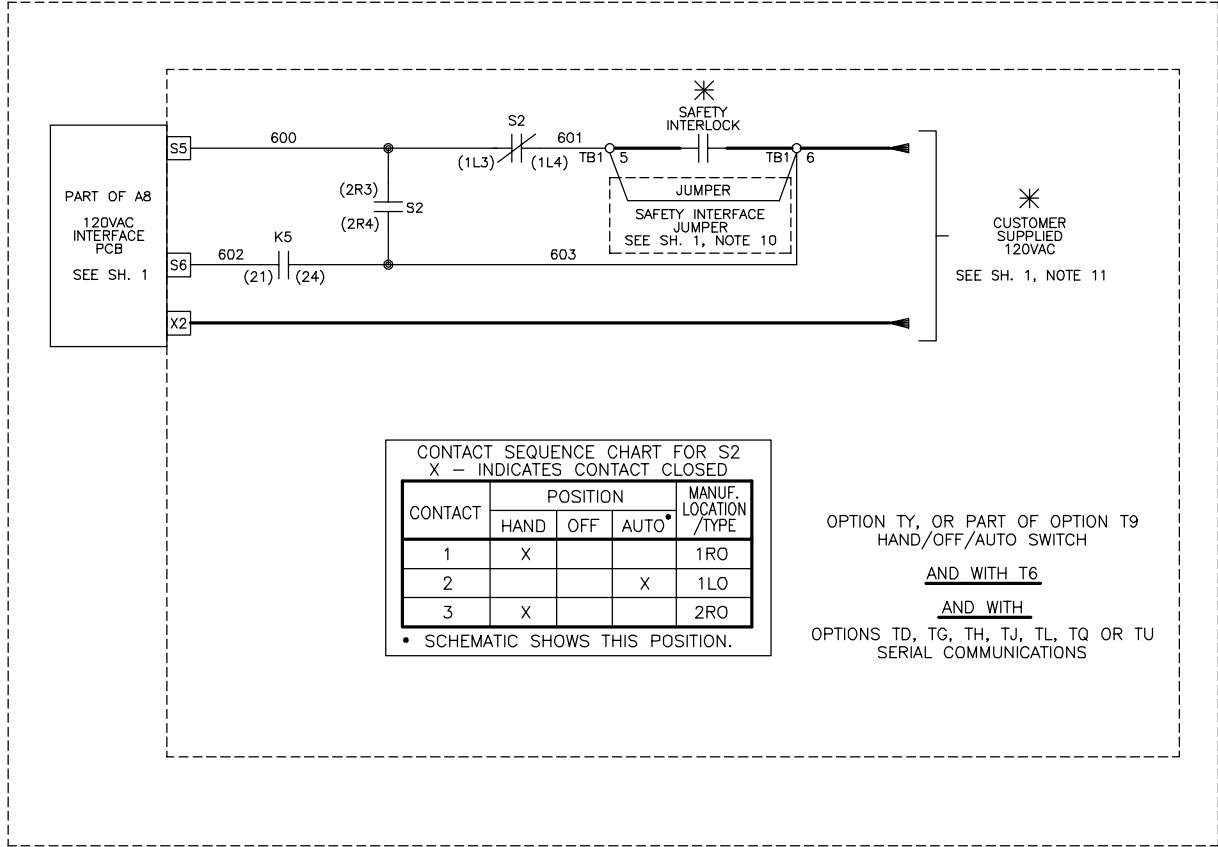
CONTACT SEQUENCE CHART FOR S2
X - INDICATES CONTACT CLOSED

CONTACT	POSITION			MANUF. LOCATION /TYPE
	HAND	OFF	AUTO*	
1	X			1RO
2			X	1LO
3	X			2RO

* SCHEMATIC SHOWS THIS POSITION.

OPTION T9, OR PART OF OPTION T9
HAND/OFF/AUTO SWITCH
AND WITH

OPTIONS TD, TG, TH, TJ, TL, TQ OR TU
SERIAL COMMUNICATIONS



CONTACT SEQUENCE CHART FOR S2
X - INDICATES CONTACT CLOSED

CONTACT	POSITION			MANUF. LOCATION /TYPE
	HAND	OFF	AUTO*	
1	X			1RO
2			X	1LO
3	X			2RO

* SCHEMATIC SHOWS THIS POSITION.

OPTION T9, OR PART OF OPTION T9
HAND/OFF/AUTO SWITCH
AND WITH T6

AND WITH

OPTIONS TD, TG, TH, TJ, TL, TQ OR TU
SERIAL COMMUNICATIONS

FOR ALL WIRE CONNECTION TO 120VAC INTERFACE PCB A8:
WIRE RANGE: (24 - 17) AWG.
WIRE TORQUE: (1.95 - 2.21) LB.-IN

SEE SHEET 1 FOR NOTES.

YASKAWA	DRAWN BY:	D.R. CMELAK	DATE:	11/16/12	TITLE:	SCHEMATIC DIAGRAM IQPUMP1000 CONFIGURED TYPE 3R			
	CHECKED:	D. PACKER	DATE:	11/16/12	SIZE:	D	REVISION:	08	PAGE:
APPROVED:		K. FLIERL	DATE:	11/16/12	THIS DOCUMENT AND INFORMATION CONTAINED IN IT ARE CONFIDENTIAL, AND CANNOT BE COPIED OR DISCLOSED IN WHOLE OR IN PART WITHOUT THE EXPRESS WRITTEN CONSENT OF YASKAWA AMERICA INC.				
ORIGINAL DESIGN:		D.R. CMELAK	DATE:	11/16/12	DRAWING # DS.Q1C3R.05				